



Money Manager GUI

User Guide



Table of Contents

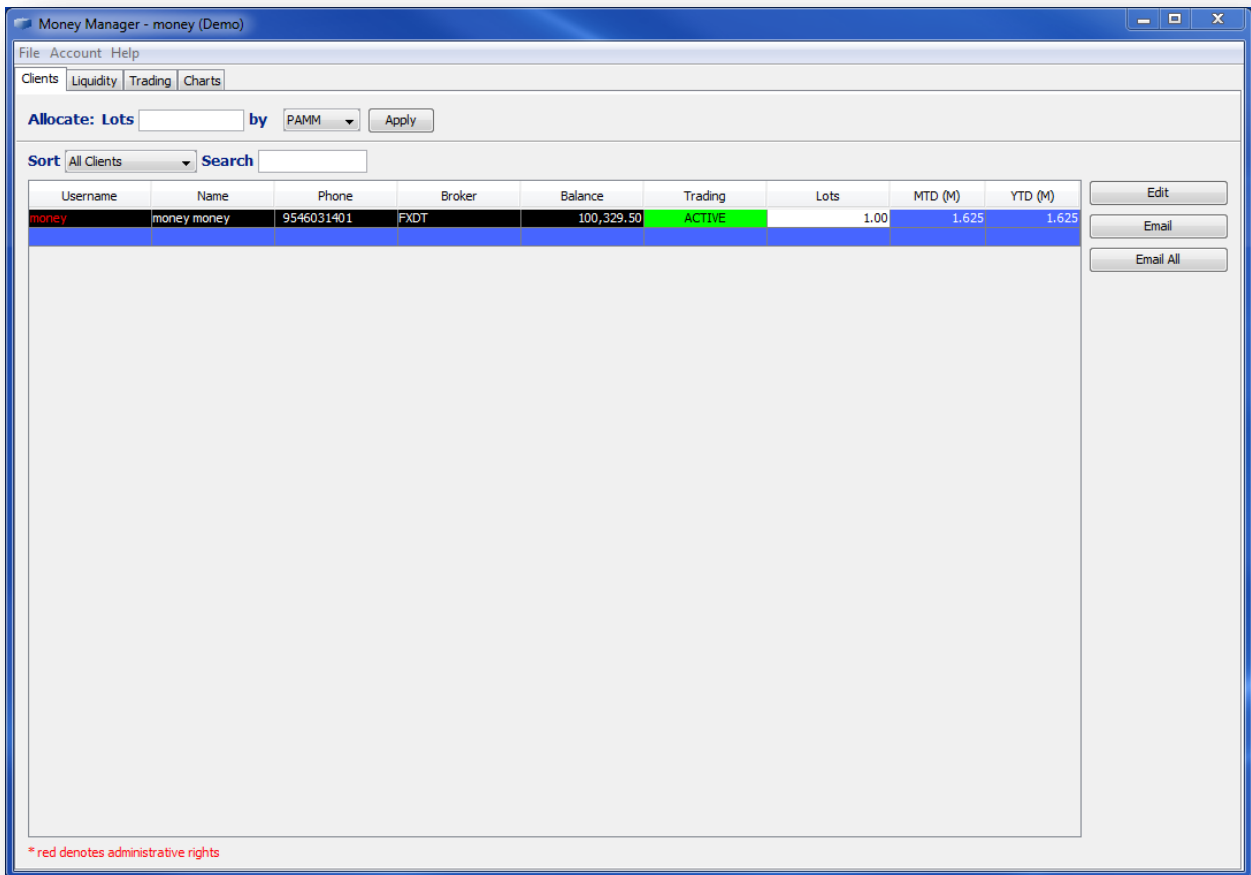
Introduction	3
Clients.....	3
Liquidity.....	4
Trading	6
Charts.....	8


Introduction

The Money Manager GUI allows for convenient control over managed accounts. This guide describes the functions of the four tabs within the GUI, which include Clients, Liquidity, Trading, and Charts.

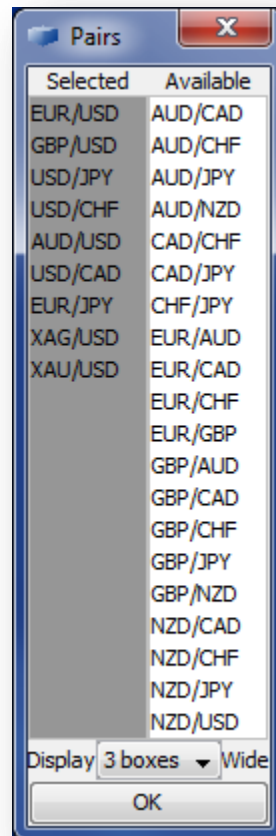
Clients

The first tab in the Money Manager is the Clients section, where you can edit managed accounts and send emails. Allocate lots to accounts based on PAMM (Percent Allocation Management Module) or LAMM (Lot Allocation Management Module), or enter a specific lot size for an individual account.



Click the  button to switch to the T view, a different format that contains the same information as the Line view shown above.

To add or remove pairs, right click any of the pairs displayed in the center column to bring up the window shown below. Drag the desired pairs from the Available list to the Selected list, or vice versa.



Trading

The third tab in the Money Manager is the Trading section, which includes account information and the ability to initiate, modify, and close trades.

Money Manager - money (Demo)

File Account Help

Clients Liquidity Trading Charts

Trades

Open (1) Orders (2) Exposure History

ID	System	Time	Pair	Position	Entry	Target	Stop	Rate	Lots	Fee	PIP
9002	money	6/25/12	EUR/USD	Short	1.24986	1.24590	1.25190	1.24968	1.00	0.00	1.8

Summary

MTD YTD LTD Account Mon Jun 25 - 02:59:29 PM

Balance (USD)	100,329.50
Forward Balance	100,329.50
Closed Trades P/L	329.50
Total Interest	0.00
Floating P/L	18.00
Drawdown %	0.00%
Equity	100,347.50
Margin Available	99,722.78
Margin Used %	0.62%
Max Drawdown	-135.00
Max Drawdown %	-0.13%

Signals

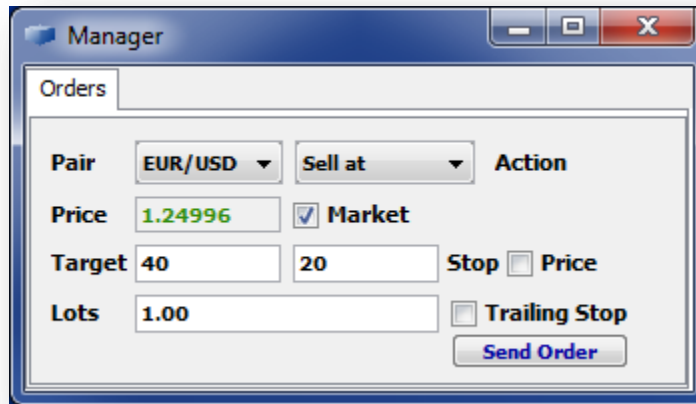
ID	System	Time	Pair	Strategy	Rate	Target	Stop
3604	money	6/25/12 2:51 PM	EUR/USD	Exit Position	1.24998		
3603	money	6/25/12 2:51 PM	EUR/USD	Sell at Market	1.24958	1.24558	1.25158
3602	money	6/25/12 2:50 PM	EUR/USD	Hold Position	1.24983	1.24590	1.25190
3601	money	6/25/12 2:08 PM	EUR/USD	Hold Position	1.25030	1.24690	1.25140
3600	money	6/25/12 2:07 PM	EUR/USD	Sell at Market	1.24986	1.24586	1.25186
3599	money	6/25/12 2:07 PM	EUR/USD	Exit Position	1.25007		
3598	money	6/25/12 2:07 PM	EUR/USD	Hold Position	1.24997	1.24620	1.25170
3597	money	6/25/12 12:40 PM	EUR/USD	Stand Aside	1.25008	1.25008	1.25008
3595	money	6/25/12 12:39 PM	EUR/USD	Buy at 1.2480	1.24987	1.25387	1.24787
3594	money	6/25/12 12:38 PM	EUR/USD	Sell at 1.2497	1.24964	1.24564	1.25164
3593	money	6/25/12 12:38 PM	EUR/USD	Exit Position	1.24987		
3592	money	6/25/12 12:37 PM	EUR/USD	Hold Position	1.24991	1.24660	1.25160
3591	money	6/25/12 12:24 PM	EUR/USD	Hold Position	1.25026	1.24560	1.25260
3590	money	6/25/12 12:24 PM	EUR/USD	Sell at 1.2515	1.25031	1.24631	1.25231
3589	money	6/25/12 12:23 PM	EUR/USD	Stand Aside	1.25027	1.25027	1.25027
3588	money	6/25/12 12:22 PM	EUR/USD	Hold Position	1.24981	1.24660	1.25110
3587	money	6/25/12 12:22 PM	EUR/USD	Buy at 1.2475	1.24980	1.25380	1.24780
3586	money	6/25/12 12:21 PM	EUR/USD	Sell at 1.2510	1.24953	1.24553	1.25153
3584	money	6/25/12 12:00 PM	EUR/USD	Exit Position	1.24793		
3583	money	6/25/12 11:36 AM	EUR/USD	Sell at 1.2496	1.24818	1.24418	1.25018
3582	money	6/25/12 11:34 AM	EUR/USD	Sell at Market	1.24812	1.24412	1.25012
3581	money	6/25/12 11:33 AM	EUR/USD	Exit Position	1.24821		

Rates

Box Line 1-Click

EUR/USD		GBP/USD		USD/JPY	
1.24	1.24	1.55	1.55	79.	79.
94 ⁵	96 ⁸	61 ⁸	64 ⁷	65 ⁹	68 ¹
Sell	Buy	Sell	Buy	Sell	Buy
1.24702	1.25730	1.55377	1.55960	79.431	80.637
USD/CHF		AUD/USD		USD/CAD	
0.96	0.96	0.99	0.99	1.02	1.02
08 ⁸	11 ³	88 ¹	90 ⁵	94 ⁰	96 ⁷
Sell	Buy	Sell	Buy	Sell	Buy
0.95502	0.96307	0.99680	1.00662	1.02435	1.03191

To open a new trade, click the buy or sell side of the desired pair in the Rates section. The new order window that pops up allows you to specify to details of your trade. Check the Market box to buy or sell at the market price, or uncheck the box and enter a limit price. Enter target and stop loss in number of pips, or check the Price box to enter Target and Stop prices. Enter number of lots to trade or click on the word Lots to convert to Units.



To add or remove pairs, right click any of the pairs displayed in the Rates section.







Charts

The fourth tab in the Money Manager is the Charts section, offering an array of technical tools. From the dropdown menus at the top of the chart, choose the currency pair and time interval to be displayed. The dropdown menu in the bottom left corner of the screen gives the option to display a Line, Bar, Candle, or Heikin Ashi chart.



Point the cursor anywhere in the chart to display the date, time, open price, high, low, close price, and present value of cursor location.

Chart Tools:

-  Save a screenshot image of the chart
-  Hide/show trade activity
-  Edit display properties (chart color, font, and gridlines)
-  Open a new window that displays multiple charts
-  Turn crosshairs on/off
-  Draw a trendline
- F** Dropdown menu of Fibonacci studies
- G** Dropdown menu of Gann lines
- LR** Draw a linear regression
- TS** Dropdown menu of various technical studies

Changes made to charts are saved on the server and will remain in effect when logged out. Right click in the chart area to remove any technical studies that have been added.

Left clicking in the chart area allows you to open a new trade. Choose market order or limit order (limit price based on where on the chart you clicked) to bring up the new order window.