



MT4 Bridge and Synchronization

Installation and Technical Information

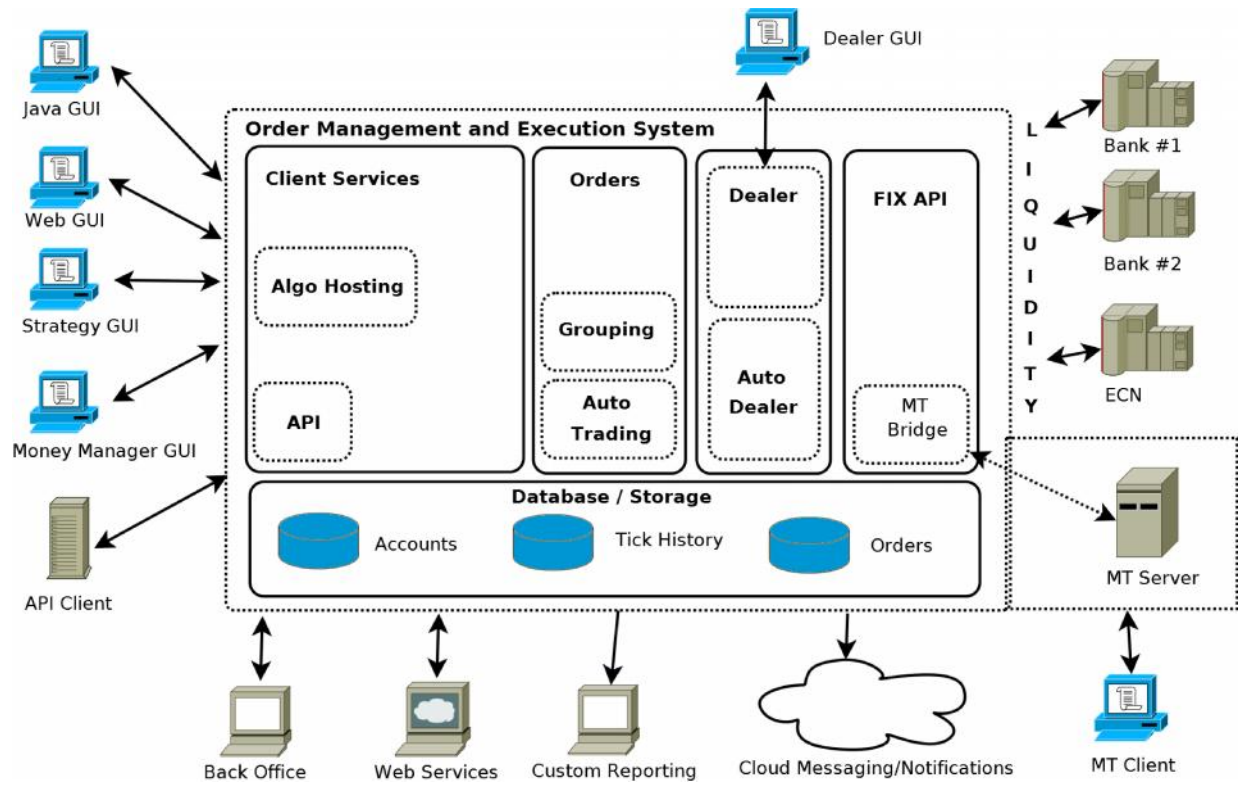


Table of Contents

Introduction	3
Installation of the MT4 Bridge.....	3
Configuration of the MT4 Bridge	4
MetaTrader Configuration	5
Feed Configuration	6
OMES Configuration	7

Introduction

The MT4 Bridge can be used to execute trades generated by MetaTrader (by traders or EA scripts) through the OMES. The OMES can hold all pending (limit/SL/TP) orders generated by MetaTrader and optionally forward them to the Liquidity Providers. The OMES provides functionality to “autotrade” trades generated by MetaTrader on multiple accounts. The transactions generated by autotrading can be executed into the Liquidity Providers as a single combined order or individual orders for each client/account.

In addition to the standard bridge execution function, we also provide full synchronization of trades. This means that either MetaTrader or the OMES GUI can be used to enter or exit trades. Any trade that goes through the OMES will be visible on both platforms, regardless of which it was entered or closed.




Installation of the MT4 Bridge

Installation is performed by copying the **mt4sync.dll** file into the MetaTrader plugin directory. In normal installations this is in the folder C:\MetaTrader4Server\plugins. Note that the MetaTrader server needs to be restarted before the plugin is loaded.

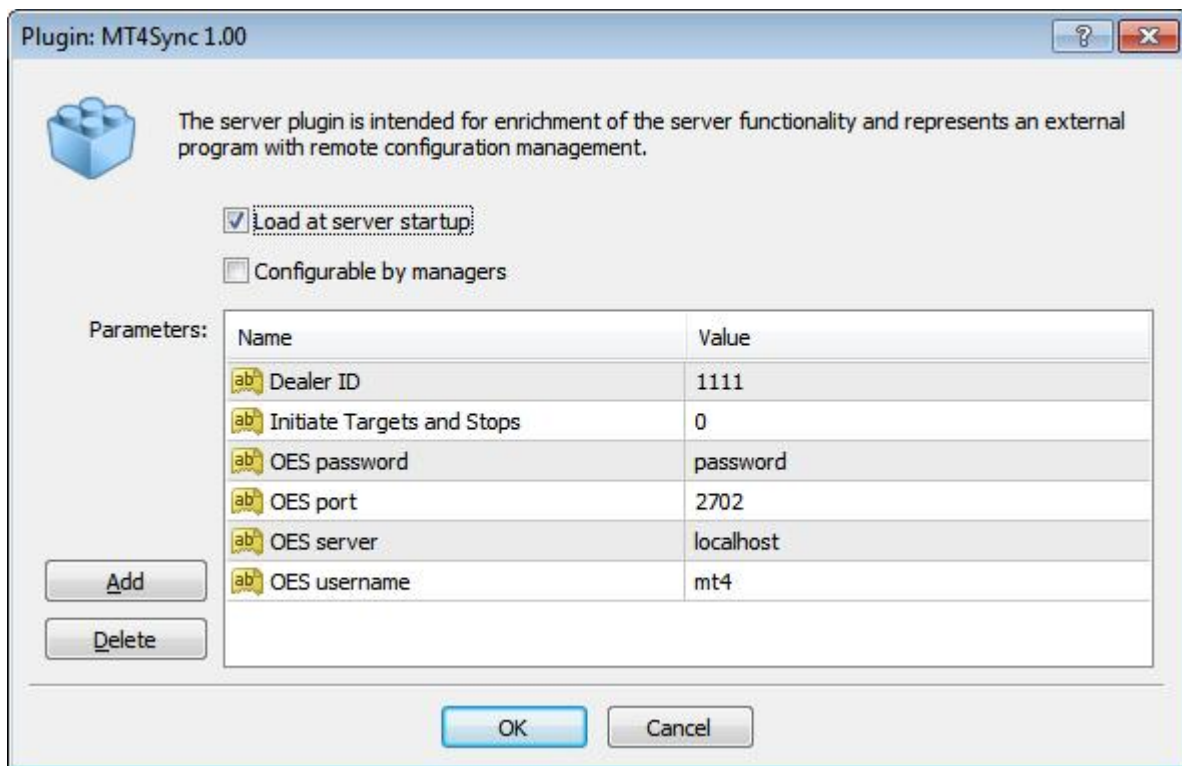
After the MetaTrader server is restarted a file named mt4sync.log is created in the plugins directory. This file can be monitored to see details of the operation of the bridge and to verify it is successfully loaded. We recommend the free utility “baretail” (<http://www.baremetalsoft.com/baretail/>) to monitor/view this logfile.

Configuration of the MT4 Bridge

After the plugin is loaded by the MetaTrader server, it can be configured by using the MetaTrader Administrator program. When the plugin is successfully loaded it will show up in the plugin tab:

Name	Version	Copyright	File
 LogAnalyser Settings	1.00	MetaQuotes Software Corp.	LogAnalyser.dll
 TopTraders Settings	1.00	MetaQuotes Software Corp.	TopTraders.dll
 MT4Sync	1.00		mt4sync.dll

Double click on MT4Sync to bring up the plugin configuration dialog:



The “dealer ID” is the user-id of the user with dealer permissions that the plugin is using (see MetaTrader Configuration section). The OMES server and port define the location of the OMES. If it is installed on the same server it will be “localhost”. If you are using a hosted OMES, your provider can supply you with the IP address.

MetaTrader Configuration

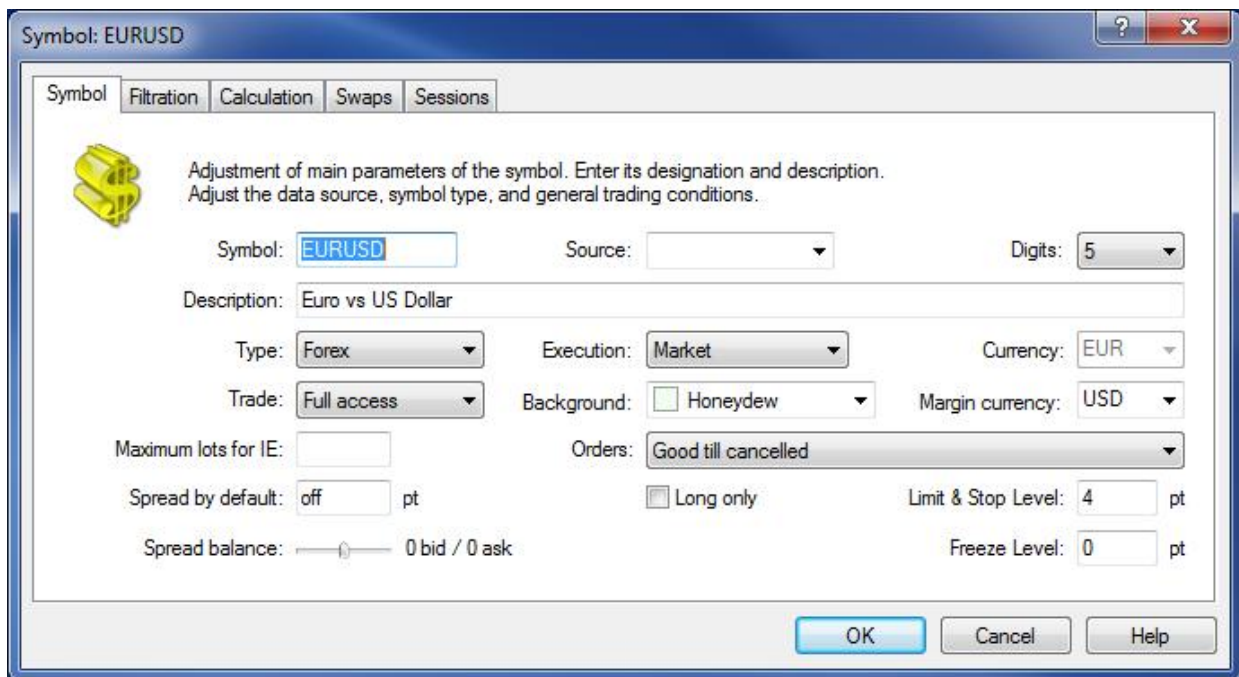
In order to work correctly with the bridge, there are several settings in the MetaTrader server that need to be set in a specific way:

In MetaTrader Administrator the execution mode needs to be set to **Market Execution** for all symbols in the Symbols tab.

In the Securities Configuration of the group the execution mode should be set to “**Manual, no automation**”. This will allow the plugin to act as a dealer, intercept the trades and execute them through the OMES.

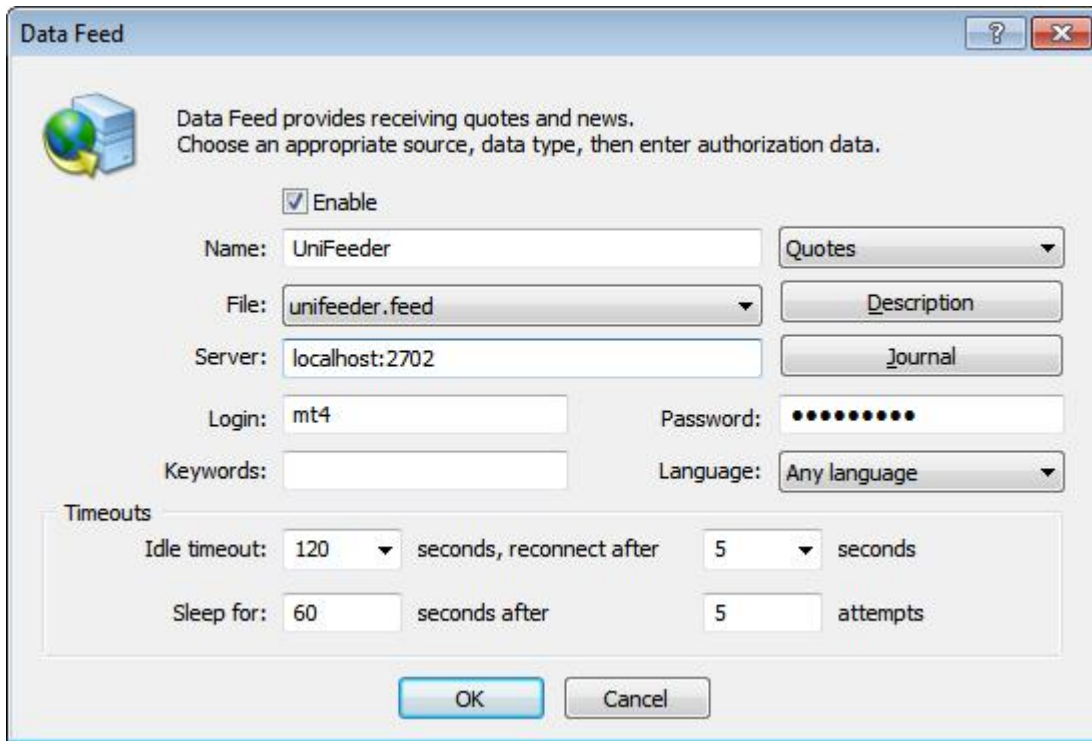
The plugin configuration requires a user id of a dealer. We recommend that users of the plugin setup a special manager account with dealer permissions for the plugin.

In the MetaTrader symbol configuration make sure the “Spread by default” option is “off” (blank), Digits is set to 3 or 5 (showing pipette for the pair), Filtration level is set at least 10 times more that the default (because of the extra digit), and Calculation Contract Size is set to 100,000.



Feed Configuration

To use the OMES tick feed with MetaTrader, the UniFeeder can be used. In the Feeds section of MetaTrader Administrator add a new feed, select the type UniFeeder. The server hostname, port and username and password are the same as in the configuration for the plugin.



Data Feed

Data Feed provides receiving quotes and news.
Choose an appropriate source, data type, then enter authorization data.

Enable

Name: UniFeeder Quotes

File: unifeeder.feed Description

Server: localhost:2702 Journal

Login: mt4 Password: ●●●●●●●●

Keywords: Language: Any language

Timeouts

Idle timeout: 120 seconds, reconnect after 5 seconds

Sleep for: 60 seconds after 5 attempts

OK Cancel

OMES Configuration

To select a user for synchronization with MetaTrader, add the MetaTrader user ID to the “MT User” field when creating or updating a user account in the Back Office:

Username *	<input type="text" value="user21000"/>	Password *	<input type="text"/>	Rep. Password *	<input type="text"/>
MT user	<input type="text" value="21000"/>	Hint	<input type="text"/>	Answer	<input type="text"/>
Email *	<input type="text"/>	SSN or Tax ID	<input type="text"/>	Citizenship	<input type="text"/>
Phone	<input type="text"/>	FAX	<input type="text"/>	DOB	<input type="text"/>

Depending on the liquidity connected to the OMES, trades from users that are autotrading the same system can be combined in a single execution. To configure this for a user, selected the **Combined** API execution mode.

If the API feed cannot support combined execution, the **Individual** API execution mode must be selected. When this option is selected, the user’s API Account number must be added in the “API Account” field. This number is then used in the FIX Account field when executing individual trades for this user.

Home Currency	<input type="text" value="USD"/>	Leverage	<input type="text" value="50"/>	Trading Mode	<input type="text" value="self"/>
Feed	<input type="text" value="DEMO"/>	API Execution	<input type="text" value="Combined"/>	API Account:	<input type="text" value="3222100"/>